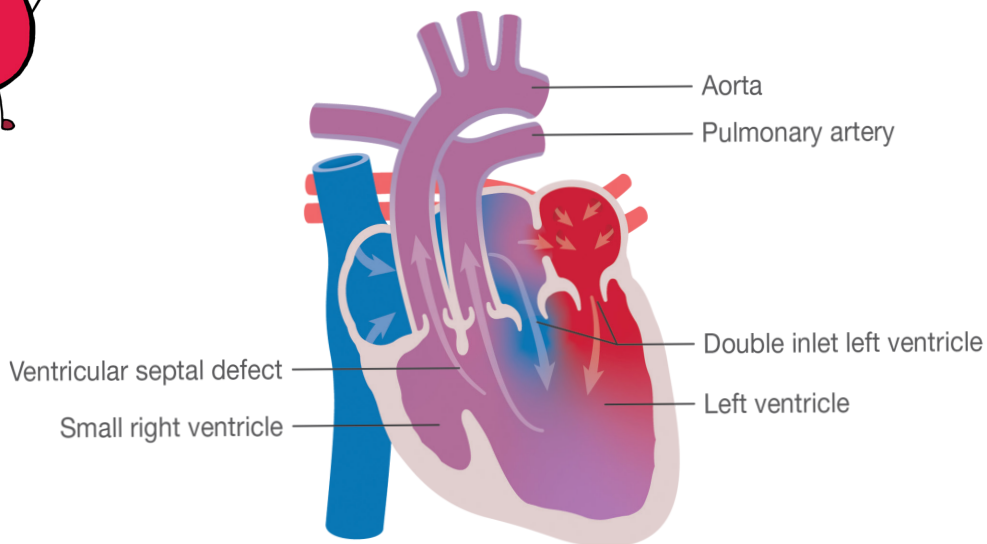
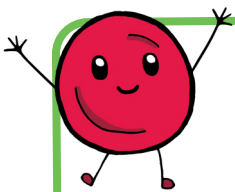


Little Hearts Matter

Double Inlet Left Ventricle



Can you see the arrows in the middle of the heart? That's where the problem is, the blood isn't very organised and so doesn't flow to the lungs very well.

If you have this condition you will need to have an operation to help the blood flow better to the lungs so that George and his friends can pick up the oxygen they need to help you make energy.

